



BIM7AA TYPE CODE
V. 3.2 - 2017.12.22 UK

INDEX

Introduction	3
Type code	4
Example of a building component code	5
Type code main categories	6
0. Generic building elements	7
1. Substructure	8
2. Primary building elements	9
3. Complementary building elements	10
4. Covering, cladding and finishing	11
5. Plumbing - and HVAC control systems	12
6. Electrical and mechanical installations	17
7. Furniture and equipment	21
8. Planting and external ground finishes	22
9. Project Equipment	23
BIM7AA Type Code list, example 1:	
Arch / Structure / Landscape	24
BIM7AA Type Code list, example 2:	
Electrical and mechanical systems / Plumbing- and HVAC control systems	25
Information	26



INTRODUCTION

MAIN PURPOSE

What is BIM7AA Type Code?

BIM7AA Type Code is a simple encoding method for BIM components based on the consultant's design requirements, experiences, Danish way of building and best practice for all size BIM projects.

The structure in BIM7AA Type Code is a modernised version of the familiar and thoroughly tested SfB system, modified to suit today's requirements for managing a BIM project.

This method structures and generates cohesion between the BIM components, tender list, specification and quantity take-offs (QTO) here by defining the interface between the consultants professions. In doing so, a simple standardisation of the consultant's internal methods of production is obtained, making it adaptable to the specific project in terms of classifications, properties and other relevant parameters to each project.

BIM7AA Type Code is not developed with the intention of being a classification system – but its structure makes it easy to use for classification purposes.

One of the purposes of BIM7AA Type Code is to meet 80-90 percent of the needs for type coding of a given project. The remaining 10-20% is developed to be company-specific and/or project specific.

BIM7AA compiles experiences from running projects to update the Type Code.



7 ADDITIONAL FACTS ABOUT THE BIM7AA TYPE CODE:

1. Complies with the Executive Order of CT Order 118 and 119 § 4 on requirements for structuring digitalbuilding objects
2. Complies with the requirements for management of building models and objects cf. CF Order 118 and 119
3. Practice-oriented
4. Easy to intergrate with other classification systems like DBK, CCS, IFC management - classification
5. Is a commercial viable method for building-project consultants
6. Does not require supplementary software
7. Free of charge

TYPE CODE

Building component code

The coding structure will be represented in the building objects, as well as in the software, and will follow the building object as a unique code for the specific building object through all project phases.

Properties

The Type Code determines a structure in which selected properties help to specify a group of building components. This is exemplified by “212 Exterior in situ wall”.

In the project, the building component’s properties will be added at type level when new building components are created. This can be within the BIM model, an outline specification, a drawing note or a building element database.

Depending on the project, object type etc. one or more types of information may need to be added additionally. This could be information such as fire rating, contract id or another classification coding in accordance with the client’s facility management system. From that point on the Type Code can be used in combination or individually for annotation, filtering, browser sorting, queries etc.

The Type Code contains the following trade disciplines:

Architecture/Structure/Plumbing/HVAC/Electricity/Mechanical installation/Landscaping.



EXAMPLE OF A BUILDING COMPONENT CODE



Breakdown:

224019 Stud Wall, Plasterboard, 145, 95L-GG/GG-M95

The building component code tells us:

- That it is an building component in Type code 224 (Interior frame structure walls)
- That it is a type number 019 under the type-coding category
- That the type text systematically describe the accosted building component type

The building element consists of three constituent element:

TYPE CODE: 224

The operational grouping of the building component type – always the first three numbers.

THE TYPE NUMBER: 019

The unique building component type number under the associated building component type group – number of digits depends on the discipline.

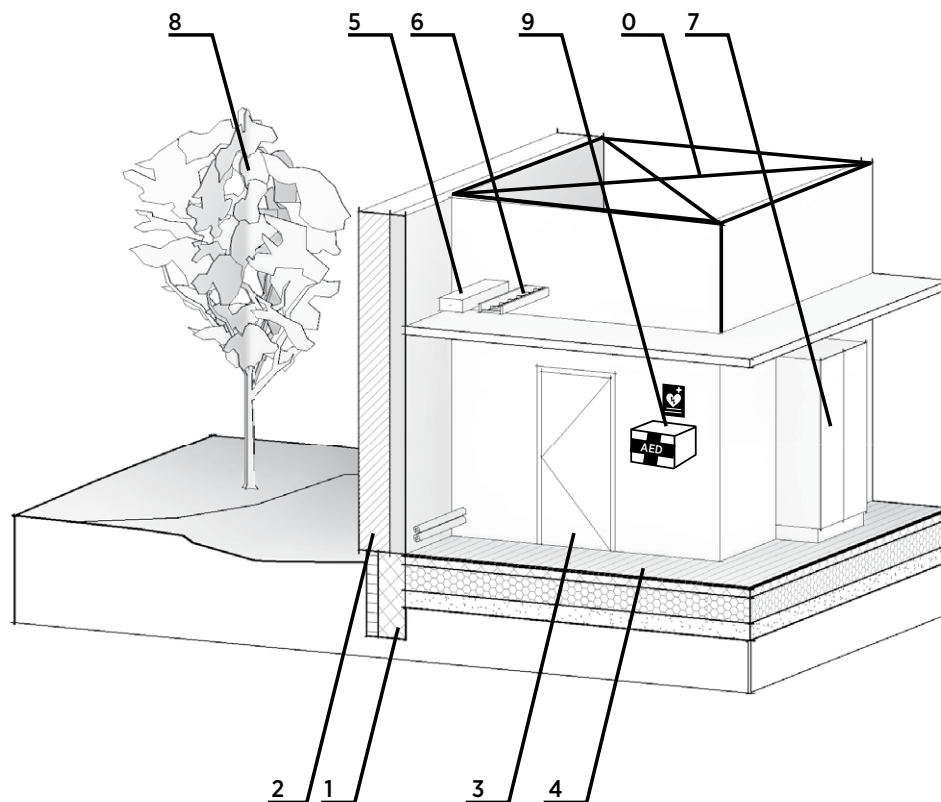
TYPE TEXT: Stud Wall, Plasterboard, 145, 95L-GG/GG-M95

The exploratory and descriptive text addresses the unique building. Only the Type Code is defined in the BIM7AA Type Code. The type number and type text is defined in the company and / or project strategy

Please refer to the graphic examples illustrated in this booklet and in the spreadsheet on www.BIM7AA.com



TYPE CODE MAIN CATEGORIES



- 0. Generic building elements
- 1. Substructure
- 2. Primary building elements
- 3. Complementary building elements
- 4. Overfladebygningsdele
- 5. Plumbing - and HVAC control systems
- 6. Electrical and mechanical installations
- 7. Furniture and equipment
- 8. Planting and external ground finishes
- 9. Project Equipment



GENERIC BUILDING ELEMENTS

Cat. Code Typename

01 Generic objects ARCH
011 AVALIABLE

02 Generic objects CON
021 AVALIABLE

03 Generic objects HVAC
031 AVALIABLE

04 Generic objects PLU
041 AVALIABLE

05 Generic objects EL
051 AVALIABLE

06 Generic objects LAND
061 AVALIABLE

07 Generic objects Contractor/supplier
071 AVALIABLE





SUBSTRUCTURE

Cat. Code Typename

10 Terrain

- 101 Ground leveling, top soil removal
- 102 Cofferdam incl. stiffening
- 103 Sheet pile walls
- 104 Building site

12 Foundations

- 121 Strip foundations
- 122 Pad foundations
- 123 Footing foundations
- 124 Block foundations
- 125 Machine foundations
- 126 Pile foundations/ circular footing
- 127 Landscape foundations

13 Floor beds

- 131 Ground floor slabs

18 Other substructure components

- 181 Ducts under the terrain
- 182 Quarrys and swamps





PRIMARY BUILDING ELEMENTS

Cat. Code Typename

20 Terrain

201 Wall fences
202 Retaining walls
203 Underground service access incl.
pipe bridges and tunnels
204 Pedestrian bridges, viaducts etc..
205 Stairs and ramps in terrain

21 Exterior walls

211 Precast walls
212 In-situ walls
213 Masonry walls
214 Frame structured walls
215 Frame structured bulkhead walls
216 Curtain walls
217 Wall Insulation
218 Light shafts

22 Interior Walls

221 Precast walls
222 In-situ walls
223 Brick walls
224 Frame structured walls
225 Frame structured bulkhead walls
226 Curtain walls

23 Slabs

231 Precast slabs
232 In-situ slabs
233 Frame structured slabs
234 Screeds
239 Other slabs

Cat. Code Typename

24 Stairs and ramps

241 Precast stairs
242 In-situ stairs
243 Composite stairs
244 Precast ramps
245 In-situ ramps
246 Composite ramps
247 Fixed ladders, ladders and steps

25 Load-bearing beams and columns

251 Precast beams
252 In-situ beams
253 Steel beams
254 Other beams
255 Precast columns
256 In-situ columns
257 Steel columns
259 Other columns

26 Balconies and exterior hallways

261 Precast balconies and exterior
hallways
262 In-situ balconies and exterior
hallways
263 Composite balconies and exterior
hallways

27 Roofs

271 Rafter roofs
272 Roof cassettes
273 Warm roofs
274 Curtain roofs
275 Movable roofs
276 Canopies and shelters
279 Other roof constructions

28 Other primary building elements





COMPLEMENTARY BUILDING ELEMENTS

Cat.	Code	Typename	Cat.	Code	Typename
30 Terrain			33 Slabs		
	301	Fences, pergola, foreclosure		331	Floor finishes raised on joists
	302	Complementary stairs, ramps in terrain		332	Floating floors
	303	Transitions - E.g. threshold channel, scraper		333	Hatches, grates, mat wells and frames
31 External walls				334	In-situ floors
	311	Doors		335	Raised finishes
	312	Windows		336	Sound absorbers
	313	Doors, curtain wall systems		339	Other slaps complementaries
	314	Window openings, curtain wall systems	34 Stairs and ramps		
	315	Panels, spandrels and mullion profiles, curtain wall systems		341	Railings, guardrails and handrails, exterior
	316	Ports and revolving doors		342	Railings, guardrails and handrails, interior
	317	Wall, screening walls		343	Gratings, mat wells and frames
	319	Other secondary elements to external walls		349	Other stair complementaries
32 Interior walls			35 Ceilings		
	321	Doors		351	Interior suspended ceilings
	322	Windows, hatches and trapdoors		352	Exterior suspended ceilings
	323	Doors, curtain wall systems		353	Interior surface mounted ceilings
	324	Window openings, curtain wall systems		354	Exterior surface mounted ceilings
	325	Windows, spandrels and mullions, curtain walls		355	Interior ceiling skirts
	326	Doors and revolving doors		356	Exterior ceiling skirts
	327	Moveable inside walls		357	Sound absorbers
	328	Screening walls	36 Balconies		
	329	Other secondary elements to interior walls		361	Handrails, parapets
			37 Roof		
				371	Dormers
				372	Skylights, smoke hatches and roof access hatches
				373	Sunscreen for skylights
				374	Mansafe systems
				375	Fire parapet walls
				376	Flashings
				377	Coverings on finished roofs
			38 Other secondary building elements		





COVERING, CLADDING AND FINISHING

Cat. Code Typename

41 Exterior walls

411 Painted
412 Coverings, cladded
413 Coverings, mounted

42 Interior walls

421 Painted
422 Coverings, cladded
423 Coverings, mounted

43 Suspended floors

431 Painted
432 Coverings, cladded
433 Coverings, mounted

44 Stairs and ramps

441 Painted
442 Coverings, cladded
443 Coverings, mounted

45 Ceiling, finishes

451 Painted
452 Coverings, cladded
453 Coverings, mounted

46 Balconies

461 Painted
462 Coverings, cladded
463 Coverings, mounted

47 Roofs

471 Painted
472 Coverings, cladded

48 Surface building, other





PLUMBING - AND HVAC CONTROL SYSTEMS

Cat.	Code	Typename	Cat.	Code	Typename
50 Terrain			55 Cooling		
	501	Metalpipes in ground		551	Mechanical Equipments
	502	Flexible Plastic Pipes in Ground		552	Cooling Devices
	503	Hard Plastic Pipes in Ground		553	Colling producing installations
	504	Manholes	56 Heating		
	505	Grating/Line Drain		561	Mechanical Equipments
	506	Seperator (oil, fat, petrol)		562	Heaters
	507	Sanitation connections		563	Heat Producing Systems
	508	Accessories	57 Ventilation		
51 Logistics				571	Ducts
	511	Waste and Logistics Systems		572	Ventilation Cooling / Heating exchangers
52 Wastewater and Sanitation				573	Duct accessories
	521	Wastewater and corresponding accessories		574	Fans
	522	Toilet and corresponding		575	Air Terminals
	523	Sinks		576	Connections to Equipment
	524	Drain Connections to Equipment		577	Roof Cap / Through Penetration
	525	Water and Drain connections to Equipment		578	Duct insulation
	526	Water and Drain connections to Technical Equipment	58 Sprinkler		
	527	Water - drain connections to laboratory equipment		581	Mechanical Equipments
	528	Bathtubs and similar		582	Sprinkler Heads (Nozzel)
53 Water (cold / hot water, treated water)				583	Fire Hose Cabinets
	531	Mechaincal Equipments	59 Multi discipline components		
	532	Water Supply Connections		591	Metal Pipes in Building
	533	Water Treatment Systems		592	Flexible Plastic Pipes in Building
	534	Fire Cabinets		593	Hard Plactic Pipes in Building
54 Air Type (Gas, compressed air, Vacum, Steam)				594	Static valves
	541	Mechanical Equipments		595	Dynamic Valves
	542	Air Type Extractions		596	Motorised pipes accessories
	543	Air Type Production Systems		597	Gauges, Filters and misc.
	545	Accessories		598	Pipe Insulations
				599	Bearing, Corbels, Stands, Holes and Recesses





Subdivision of Type Codes for plumbing and HVAC systems

Type Codes for plumbing and heating / HVAC systems on page 12

Code	No.	Typename	Code	No.	Typename
501		Metalpipes in ground	511		Logistics
502		Flexible Plastic Pipe in Ground	511 1		Waste
503		Hard Plastic Pipes in Ground	511 2		Logistics
504		Manholes	521		Wastewater and corresponding accessories
	504 1	Manholes	521 1		Floor Drains
	504 2	Drainage Manholes	521 2		Special Drains
	504 3	Downspout Chambers	521 3		Hopper Heads
	504 4	Pump Control Chambers	521 4		Vacum Valves
	504 5	Inspection Junctions	521 5		Roof Drains
	504 6	Dry Chambers	521 6		Downpipe aerators
	504 7	Sandtraps (silttrap)			
	504 8	Gutter manholes			
505		Grating/Line Drain	522		Toilets and corresponding
	505 1	Line Drains	522 1		Toilets
	505 2	Grates	522 2		Bidets
			522 3		Urinals
			522 4		Waterless urinals
506		Seperators (oil, fat, petrol)	523		Sinks
	506 1	Oil Seperators	523 1		Hand Sinks
	506 2	Fat Seperators	523 2		Kitchen Sinks
	506 3	Sludge Traps	523 3		Utility Sinks
			523 4		Steel Sinks
			523 5		Slop Sinks
			523 6		Labratory Sinks
			523 7		Washing Tables
			523 8		Wash troughs
507		Sanitation connections	524		Drain Connections to Equipment
	507 1	Floor Drains	524 1		Air curtain merchandisers
	507 2	Wash trough	524 2		Condensation Drains
	507 3	Toilets			
	507 4	Sinks	525		Water and Drain connections to Equipment
	507 5	Down Pipes (spout)	525 1		Drinking Water Coolers
	507 6	Equipments	525 2		Ice Dispensers
			525 3		Coffee Machines
508		Accessories			
	508 1	Rain water storage modules			
	508 2	Backflow stoppers			
	508 3	Fire Hydrants			
	508 4	Tanks			





Subdivision of Type Codes for plumbing and HVAC systems

Type Codes for plumbing and heating / HVAC systems on page 12

Code	No.	Typename	Code	No.	Typename
526		Water and Drain connections to Technical Equipment	541		Mechanical Equipment
	526 1	<i>Dishwashers</i>		541 1	<i>Meter arrangements</i>
	526 2	<i>Ovens</i>		541 2	<i>Monitoring Units</i>
	526 3	<i>Washing Machienes</i>		541 3	<i>Emergency Shut Off Valve Boxes</i>
	526 4	<i>Tray Washs</i>		541 4	<i>Emergency Supply Units</i>
	526 5	<i>Decontaminators</i>		541 5	<i>Regulators</i>
527		Water - drain connections to laboratory equipment	542		Air Type Extraction
	527 1	<i>Extraction Cabinets</i>	543		Air Type Production System
	527 2	<i>Fume Cabinets</i>		543 1	<i>Air Pressure Compressors</i>
528		Bathtubs and similar		543 2	<i>Vacum Systems</i>
	528 1	<i>Bathtubs</i>		543 3	<i>Gas Cannisters</i>
531		<i>Mechaincal Equipments</i>		543 4	<i>Tanks</i>
	531 1	<i>Meter arrangements</i>	545		Accessories
	531 2	<i>Circulation Pumps</i>		545 1	<i>Canister Gas Regulators</i>
	531 3	<i>Distribution Pipes for Water</i>		545 2	<i>NIST Couplers</i>
	531 4	<i>Pressure Booster Systems</i>	551		Mechanical Equipment
532		Water Supply Connections		551 1	<i>Meter arrangements</i>
	532 1	<i>Faucets</i>		551 2	<i>Circulation Pumps</i>
	532 2	<i>Outdoor Faucets</i>		551 3	<i>Distribution Pipes for Cooling</i>
	532 3	<i>Fire Riser Pipes</i>		551 4	<i>Cooling shunts</i>
	532 4	<i>Safety Showers</i>		551 5	<i>Cool Exchangers</i>
	532 5	<i>Showers</i>		551 6	<i>Storage Tanks</i>
	532 6	<i>Tilting Kettles</i>	552		Cooling Devices
	532 7	<i>Faucets (Supply Valve)</i>		552 1	<i>Evaporators</i>
533		Water Treatment System		552 2	<i>Cooling Coils</i>
	533 1	<i>Chlorine Dioxide Systems</i>		552 3	<i>Fan Coils</i>
	533 2	<i>Corrosion Systems</i>		552 4	<i>Chilled Beams</i>
	533 3	<i>Production BBK</i>	553		Colling producing installation
	533 4	<i>Production RO (reverse osmosis)</i>		553 1	<i>Cooling Centrals</i>
	533 5	<i>Parafin Rinses</i>		553 2	<i>Chillers</i>
	533 6	<i>Filtering Systems</i>		553 3	<i>Free coolers</i>
534		Fire Cabinet		553 4	<i>Dry coolers</i>
	534 1	<i>Fire Hose Reels</i>		553 5	<i>Cooling compressors</i>





Subdivision of Type Codes for plumbing and HVAC systems

Type Codes for plumbing and heating / HVAC systems on page 12

Code	No.	Typename	Code	No.	Typename
561		Mechanical Equipments	573		Duct accessoriesrs
	561 1	<i>Meter arrangements</i>		573 1	<i>Silencers</i>
	561 2	<i>Pumps</i>		573 2	<i>Flame and Smoke Dampers</i>
	561 3	<i>Distribution Pipes for Heating</i>		573 3	<i>Fire and Smoke Dampers</i>
	561 4	<i>Heating Shunts</i>		573 4	<i>Overpressure Dampers</i>
	561 5	<i>Heat Exchangers</i>		573 5	<i>Smoke Dampers</i>
	561 6	<i>Expansion vessels</i>		573 6	<i>Damper on/off</i>
	561 7	<i>Domestic hot water heat exchangers</i>		573 7	<i>Volume Flow Regulators</i>
	561 8	<i>Hot Water Storages</i>		573 8	<i>Filters</i>
562		Heaters	574		Fans
	562 1	<i>Heating Coils</i>		574 1	<i>Fans</i>
	562 2	<i>Radiators</i>		574 2	<i>Axial Fans</i>
	562 3	<i>Floor Heatings</i>		574 3	<i>Box Fans</i>
	562 4	<i>Hydronic Panels</i>		574 4	<i>Duct Fans</i>
	562 5	<i>Convectors</i>		574 5	<i>Extraction Fans</i>
	562 6	<i>Air Curtains</i>		574 6	<i>Roof Fans</i>
	562 7	<i>Heat Calorifiers</i>		574 7	<i>Wet Room extractor fans</i>
				574 8	<i>Wall Fans</i>
563		Heat Producing Systems	575		Air Terminals
	563 1	<i>Gas Boilers</i>		575 1	<i>Nozzles</i>
	563 2	<i>Oil Boilers</i>		575 2	<i>Displacement Diffusers</i>
	563 3	<i>Pellet Boilers</i>		575 3	<i>Ceiling Diffusers</i>
	563 4	<i>Straw Boilers</i>		575 4	<i>Ceiling Diffusers (Visible)</i>
				575 5	<i>Clean Room Diffusers</i>
571		Ducts		575 6	<i>Grating / Wall louvrers</i>
	571 1	<i>Circular Ducts</i>		575 7	<i>Supply air bags</i>
	571 2	<i>Rectangular Ducts</i>		575 8	<i>Air Valves</i>
	571 3	<i>Flexible Ducts</i>		575 9	<i>Overpressure valves</i>
572		Ventilation Cooling/Heating exchangers	576		Connections to Equipment
	572 1	<i>Ventilation Systems</i>		576 1	<i>Extraction hoods</i>
	572 2	<i>Heating Coils</i>		576 2	<i>Local Exhausts</i>
	572 3	<i>Cooling Coils</i>		576 3	<i>Chemical Cabinets</i>
	572 4	<i>Run around coil heat exchangers</i>		576 4	<i>Fume Cabinets</i>
	572 5	<i>Heat Recoverys</i>		576 5	<i>LAF Cabinets</i>
	572 6	<i>Heat Exchangers</i>		576 6	<i>Locks (Sluice)</i>
	572 7	<i>Humidifiers</i>		576 7	<i>Extraction Cabinets</i>
	572 8	<i>Dehumidifiers</i>		576 8	<i>Decontaminators</i>



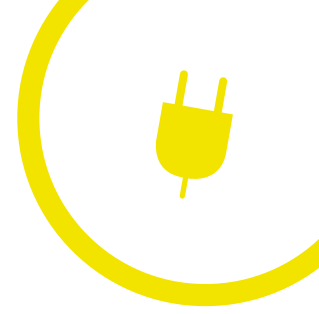


Subdivision of Type Codes for plumbing and HVAC systems

Type Codes for plumbing and heating / HVAC systems on page 12

Code	No.	Typename	Code	No.	Typename
577		Roof Cap / Through Penetration	594		Static valves
	577 1	<i>Air Exhaust hoods</i>		594 1	<i>Shut Off Valves</i>
	577 2	<i>Air Indtake hoods</i>		594 2	<i>Regulator Control Valves</i>
	577 3	<i>Exhuast Chimneys</i>		594 3	<i>Solenoid Valves</i>
	577 4	<i>Intake Chimneys</i>		594 4	<i>Saftey Valves</i>
	577 5	<i>Intake Vents in Walls</i>		594 5	<i>Aeration Valves</i>
	577 6	<i>Roof Penetrations</i>		594 6	<i>Supply Valves (Tap Valve)</i>
	577 7	<i>Membrane Penetrations</i>		594 7	<i>Adaptor Valves</i>
				594 8	<i>Zone Valves</i>
578		Duct insulation	595		Dynamic Valves
	578 1	<i>Insulations, Fire</i>		595 1	<i>Circulation Valves</i>
	578 2	<i>Insulations, Heat</i>		595 2	<i>Dynamic Regulator Control Valves</i>
	578 3	<i>Insulations, Condensation</i>		595 3	<i>Differential pressure regulators</i>
	578 4	<i>Insulations, Sound</i>			
581		Mechanical Equipments	596		Motorised pipe accessories
	581 1	<i>Pressure Tanks</i>		596 1	<i>Motorised valves</i>
	581 2	<i>Pressure Pumps</i>		596 2	<i>Motorised Differential Pressure Regulators</i>
	581 3	<i>Alarm Valvers</i>			
	581 4	<i>Flow Switchs</i>			
582		Sprinkler Heads (Nozzel)	597		Gauges, Filters and misc.
	582 1	<i>Pendant Sprinkler Heads</i>		597 1	<i>Filters</i>
	582 2	<i>Concealed pendant Sprinkler Heads</i>		597 2	<i>Flow Gauges</i>
	582 3	<i>Upright Sprinkler Heads</i>		597 3	<i>Energy Gauges</i>
	582 4	<i>Side wall Sprinkler Heads</i>		597 4	<i>Thermometers</i>
				597 5	<i>Manometers</i>
				597 6	<i>Expansion Joints</i>
				597 7	<i>Inspection Hatches</i>
				597 8	<i>Connection junctions</i>
583		Fire Hose Cabinets	598		Pipe Insulation
	583 1	<i>(Fire) Hose Reels</i>		598 1	<i>Insulations, Fire</i>
591		Metal Pipes in Building		598 2	<i>Insulations, Heat</i>
592		Flexible Plastic Pipes in Building		598 3	<i>Insulations, Condensation</i>
593		Hard Plactic Pipes in Building		598 4	<i>Insulations, Sound</i>
			599		Bearing, Corbels, Stands, Holes and Recesses
				599 1	<i>Brackets</i>
				599 2	<i>Installation channels</i>
				599 3	<i>Holes and Hole Closures</i>
				599 4	<i>Steel mounting frames</i>

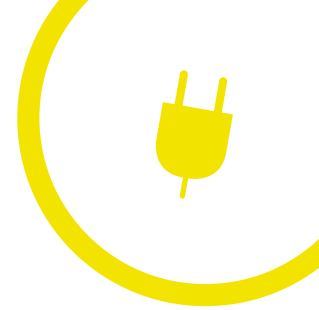




ELECTRICAL AND MECHANICAL INSTALLATIONS

Cat.	Code	Typename	Code	No.	Typename
60 Terrain			64 Communication and information		
	601	Wires		641	Communications
	602	Lightings		642	Informations
	603	Installation for underground facilities		643	Audio, video and antenna
	604	Installation for ground level facilities		644	IT infrastructure
	605	Traffic managements	65 Security		
61 Routing				651	Access security
	611	Routings		652	Security systems
	612	Trunkings		653	Individual safeguarding systems
	613	Cable ducts	66 Building automation		
	614	Fiber trays		661	Building Management Systems
	615	Fire and audio sealings		662	Central Status Controls
	616	Gaps and recesses	67 Protection		
	617	Others		671	Overvoltage protections
62 High voltage				672	Equalizer connections
	621	Supply	68 Passenger and material transportation		
	622	Distributions		681	Passenger transportations
	623	Installations for appliances and machines		682	Cargo and material transportations
63 Low voltage					
	631	Supply - external			
	632	Distributions			
	633	Installations for appliances and machines			
	634	Thermal facilities			
	635	Installations for lighting			
	636	Lighting fixtures			
	637	Power installations			
	638	Renewable energy - Internal distributions			



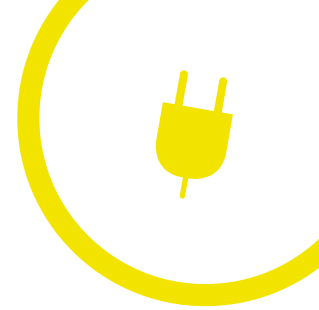


Subdivision of Type Codes for Electrical and mechanical systems

Type Codes for Electrical and mechanical systems on page 17

Code	No.	Typename	Code	No.	Typename
601	Wires		612	Trunking	
	601 1	<i>Air-wiring of high-voltage facilities</i>		612 1	<i>Trunking</i>
	601 2	<i>Ground-wiring of high-voltage facilities</i>	613	Cable ducts	
	601 3	<i>Air-wiring of low-voltage facilities</i>		613 1	<i>Flexible ducts</i>
	601 4	<i>Ground-wiring of low-voltage facilities</i>		613 2	<i>PVC ducts</i>
	601 5	<i>Wiring for electronics and weak current installations</i>		613 3	<i>Metal ducts</i>
602	Lighting		614	Fiber trays	
	602 1	<i>Street lighting</i>		614 1	<i>Fiberrunner</i>
	602 2	<i>Area lighting</i>	615	Fire and audio sealings	
	602 3	<i>Park and garden lighting</i>		615 1	<i>Fire sealings</i>
	602 4	<i>Special lighting</i>		615 2	<i>Audio sealings</i>
603	Installation for underground facilities		616	Gaps and recesses	
	603 1	<i>Facility for earth electrodes</i>		616 1	<i>Gaps</i>
	603 2	<i>Oil separator facility</i>		616 2	<i>Recesses</i>
	603 3	<i>Pump systems in wells</i>	619	Other	
	603 4	<i>Registering facility for grease separator</i>		619 1	<i>Boxes</i>
	603 5	<i>Heat wire facility</i>		619 2	<i>Embeddings</i>
	603 6	<i>Leak detection facility</i>	621	Supply	
	603 7	<i>Cooling detection facility</i>		621 1	<i>Service wires</i>
604	Installation for ground level facilities			621 2	<i>Transformers</i>
	604 1	<i>Appliances</i>		621 3	<i>Emergency and reserve supply facilities</i>
605	Traffic management			621 4	<i>AC and DC inverter facilities</i>
	605 1	<i>Traffic signal facilities</i>		621 5	<i>Phase compensation facilities</i>
	605 2	<i>Fixed signs</i>		621 6	<i>Frequency inverter facilities</i>
	605 3	<i>Dynamic signs</i>	622	Distribution	
	605 4	<i>Traffic detection</i>		622 1	<i>Main cables</i>
	605 5	<i>Barrier facilities</i>		622 2	<i>Switchgear</i>
611	Routing		623	Installations for appliances and machines	
	611 1	<i>Cable ladders</i>		623 1	<i>Production machines</i>
	611 2	<i>Cable trays</i>		623 2	<i>Pump facilities</i>
	611 3	<i>Cable trays grids</i>		623 3	<i>Motors</i>



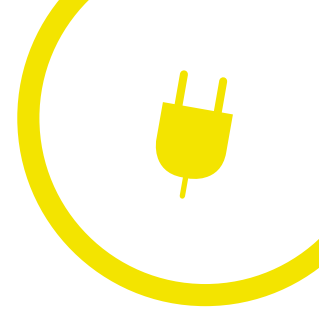


Subdivision of Type Codes for Electrical and mechanical systems

Type Codes for Electrical and mechanical systems on page 17

Code	No.	Typename	Code	No.	Typename
631		Supply - external	636		Lighting fixtures
	631 1	<i>Service wires / Bus barr</i>		636 1	<i>Fixtures - general lighting</i>
	631 2	<i>Transformer facilities</i>		636 2	<i>Fixtures - safety lighting</i>
	631 3	<i>Switchboards</i>		636 3	<i>Fixtures - special lighting</i>
	631 4	<i>Emergency and reserve supply facilities / UPS</i>	637		Power installations
	631 5	<i>Phase compensation facilities</i>		637 1	<i>Sockets</i>
	631 6	<i>Frequency inverter facilities</i>		637 2	<i>Work stations</i>
632		Distribution		637 3	<i>Outlets</i>
	632 1	<i>Main cables</i>		637 4	<i>Distribution for appliances</i>
	632 2	<i>Main boards</i>		637 5	<i>Hospital bed ward panel</i>
	632 3	<i>Distribution boards</i>	638		Renewable energy - Internal distribution
	632 4	<i>Secondary distribution boards</i>		638 1	<i>Solar panels</i>
	632 5	<i>Group distribution boards</i>	641		Communication
	632 9	<i>Other boards</i>		641 1	<i>Telephone facilities</i>
633		Installations for appliances and machines		641 2	<i>Radio facilities</i>
	633 1	<i>Boiler facilities</i>		641 3	<i>Door and entry phone</i>
	633 2	<i>Cooling facilities</i>	642		Information
	633 3	<i>Production machines</i>		642 1	<i>Recording facilities</i>
	633 4	<i>Pump facilities</i>		642 2	<i>Calling facilities</i>
	633 5	<i>Production kitchen machine facilities</i>		642 3	<i>Clock facilities</i>
	633 6	<i>Grand / shared laundry facilities</i>			
	633 7	<i>Ventilation facilities</i>			
	633 9	<i>Installations for other mechanical facilities</i>			
634		Thermal facilities			
	634 1	<i>Electrical heating surface</i>			
	634 2	<i>Hand dryer, heated towel rail</i>			
	634 3	<i>Oven facilities</i>			
635		Installations for lighting			
	635 1	<i>Facilities for general lighting</i>			
	635 2	<i>Facilities for low voltage lighting</i>			
	635 3	<i>Facilities for safety lighting</i>			
	635 4	<i>Facilities for special lighting</i>			
	635 5	<i>Facilities for lighting control</i>			





Subdivision of Type Codes for Electrical and mechanical systems

Type Codes for Electrical and mechanical systems on page 17

Code	No.	Typename	Code	No.	Typename
643		Audio, video and antenna	661		Building Management Systems
	643 1	<i>Speaker facilities</i>		661 1	<i>BMS facilities</i>
	643 2	<i>Microphone facilities</i>	662		Central Status Control
	643 3	<i>Teleloop facilities</i>		662 1	<i>CSC facilities</i>
	643 4	<i>Video facilities</i>		662 2	<i>KNX IBI facilities with central control</i>
	643 5	<i>Antenna facilities</i>			
	643 6	<i>AV facilities</i>			
644		IT infrastructure	671		Overvoltage protection
	644 1	<i>Cable and patch panels</i>		671 1	<i>Lightning protection</i>
	644 2	<i>DAS - antenna facilities</i>	672		Equalizer connections
	644 3	<i>Positioning systems</i>		672 1	<i>Main equalizer connection</i>
651		Access security		672 2	<i>Local equalizer connection without ground connection</i>
	651 1	<i>Automatic Intrusion Alarm systems</i>		672 3	<i>Additional equalizer connection</i>
	651 2	<i>Automatic Door Control systems</i>	681		Passenger transportation
	651 3	<i>Internal video surveillance systems</i>		681 1	<i>Elevators</i>
652		Security systems		681 2	<i>Lifts</i>
	652 1	<i>Automatic Fire Alarm systems</i>		681 3	<i>Escalators</i>
	652 2	<i>Automatic Fire Door Closing systems</i>		681 4	<i>Moving walkways</i>
	652 3	<i>Automatic Gas Alarm systems</i>	682		Cargo and material transportation
	652 4	<i>Automatic Room Extinguishing systems</i>		682 1	<i>Elevators</i>
	652 5	<i>Automatic Water Extinguishing systems</i>		682 2	<i>Lifts and scissors lifts</i>
	652 6	<i>Automatic Fire Ventilation systems</i>		682 3	<i>Conveyor belt</i>
				682 4	<i>Cranes and hoists</i>
653		Individual safeguarding systems			
	653 1	<i>Warning systems</i>			
	653 2	<i>Emergency Call systems</i>			
	653 3	<i>Alarm systems for cooling rooms</i>			
	653 4	<i>Detection systems for individual safeguarding</i>			
	653 5	<i>Panic alarm</i>			
	653 6	<i>Nurse call systems</i>			





FURNITURE AND EQUIPMENT

Cat. Code Typename

70 Terrain

- 701 Technical equipments
- 702 Boards, signs and screens
- 703 Storage, trash racks, bike racks, mailboxes
- 704 Table furnitures
- 705 Seating furnitures
- 706 Handrails and parapets
- 709 Other fixtures in the terrain

71 Built-in

- 711 Cabinets, drawers
- 712 Bookcases, shelves
- 713 Seating furniture, lawn furniture
- 714 Curtains, blinds, screens, curtains
- 715 Tables, Countertops
- 716 Signs, boards
- 717 Garnish
- 719 Other fixed furniture

72 Movable

- 721 Cabinets, drawers
- 722 Bookcases
- 723 Seating furniture, lawn furniture
- 724 Screens, curtains
- 725 Tables
- 726 Stands, shelves
- 727 Mats, rugs, runners
- 729 Other removable fixtures

73 Fixtures, technical, IT and audio-visual

- 731 AV equipment
- 732 IT equipment
- 733 Lighting
- 734 Vending Machines
- 735 Firefighting equipment
- 736 Appliances





PLANTING AND EXTERNAL GROUND FINISHES

Cat. Code Typename

80 Coatings and fixings

- 801 Asphalt coatings
- 802 Concrete coatings
- 803 Rubber coatings
- 804 Tilinge and paving
- 805 Crushed stone and gravel
- 806 Edge elements
- 807 Thermo-plastics and markings
- 808 Constructed furfaces - E.g.
terraces, planting bowls
- 809 Other coatings and fixings

81 Planting

- 811 Trees
- 812 Hedges
- 813 Topsoil - E.g. Topsoil in terrain
- 814 Ground cover plants
- 815 Climbers
- 816 Extensive plantingsystems
- 817 Intensive green roofs
- 819 Other planting





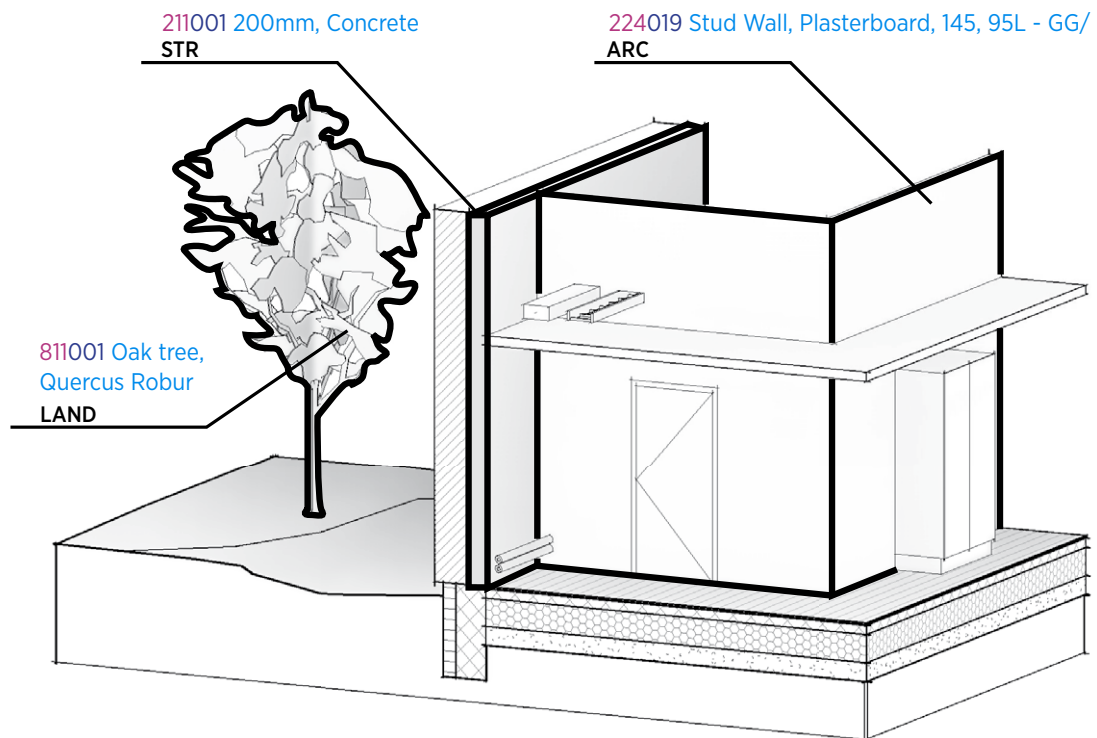
PROJECT EQUIPMENT

Cat.	Code	Typename
91	Project equipment ARC	
	911	AVALIABLE
92	Project equipment STR	
	921	AVALIABLE
93	Project equipment MECH	
	931	AVALIABLE
94	Project equipment PLUM	
	941	AVALIABLE
95	Project equipment ELEC	
	951	AVALIABLE
96	Project equipment LAND	
	961	AVALIABLE



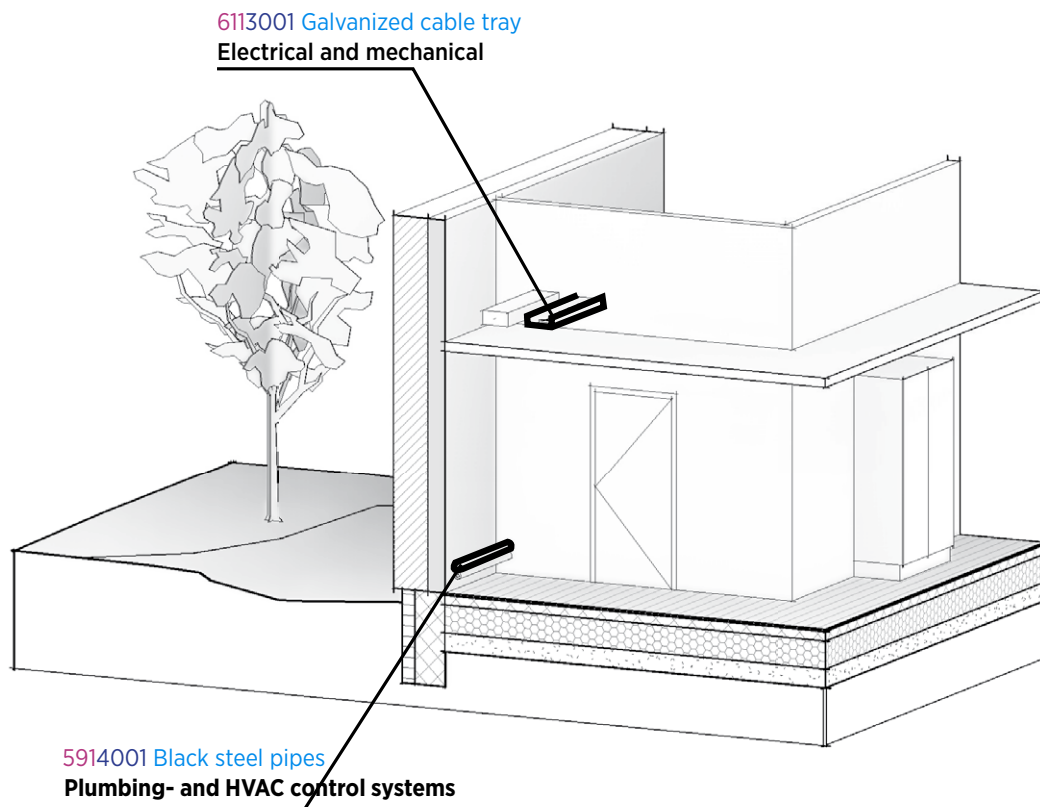
BIM7AA TYPE CODE EXAMPLE

Example 1: ARCH, STRUCTURE, LANDSCAPE



BIM7AA TYPE CODE EXAMPLES

Example 2: ELECTRICAL AND MECHANICAL SYSTEMS



INFORMATION

Collaboration group

BIM7AA

The purpose of setting up a collaboration involving seven architectural firms is to develop and continuously optimise commonly developed trade-oriented, trade-supporting and interdisciplinary BIM tools, as well as methods and processes.

The primary focus is on the trade-oriented aspect which is founded on the vast ICT and project experiences jointly possessed by BIM7AA and the other participating companies.

Collaboration group

BIM7AA Type Code is the result of voluntary collaboration involving the seven architectural firms in Aarhus, all of which are working on “super hospitals projects” currently under construction. These projects are characterised by great complexity and comprehensive ICT requirements.

Since 2013, ICT and BIM experts from the respective architectural firms – together with the Aarhus School of Architecture – have formed a task force which, through many workshops, has discussed and evaluated the possibilities of value-added productivity and optimisation of BIM processes, based on the lessons learned from project design and planning, in accordance with the Executive Orders on ICT.

BIM7AA wants to share the results of this collaboration and has therefore chosen to make the BIM7AA Type Code available for everyone. The Type Code is already being used in ongoing projects by the companies participating in the BIM7AA task force, who are at the same time compiling the lessons learnt from this to make ongoing updates of the Type Code.





AART / archi
tects

ARKITEMA
ARCHITECTS

C.F. Møller

CUBO

FRIIS & MOLTKE

LINK ARKITEKTUR

**schmidt/hammer/
lassen/
architects/**

OLUF JØRGENSEN A/S
Rådgivende Ingeniørfirma

ORBICON

Søren Jensen

The BIM7AA task force is established by:

Aarhus School of Architecture

AART architects

Arkitema Architects

C.F. Møller

CUBO Arkitekter A/S

Friis & Moltke A/S

Link arkitektur

schmidt hammer lassen architects

Interdisciplinary collaboration.

To ensure integrated Type Code involving and representing all building trade disciplines, highly qualified ICT and BIM experts representing several recognised consulting Engineering firms and landscapearchitecture firms have participated in the development work for: Structure, plumbing- and HVAC control systems as well as electrical and mechanical systems and land-scaping respectively.

Oluf Jørgensen A/S - Orbicon A/S - Søren Jensen A/S

The interdisciplinary collaboration will remain in focus for BIM7AA going forward.

The Type Code is an open-source document which is made available free of charge. BIM7AA cannot be held liable for how the user of the Type Code chooses to use it.

Link/Web

www.BIM7AA.com





AART/ archi
tects

ARKITEMA
ARCHITECTS

C.F. Møller

CUBO

= ||| FRIIS & MOLTKE

LINK ARKITEKTUR

**schmidt/hammer/
lassen/
architects/**

